

# BROUGHTON'S

322 Consumers Rd, North York, ON. M2J 1P8  
 P: 416-690-4777 F: 416-690-5357 E-mail: [sales@bbroughton.com](mailto:sales@bbroughton.com)

## Custom Cincture Template:

- 329- 65% Polyester/35% Cotton - Black White Church Purple
- 397 - 100% Polyester - Black White Church Purple Red
- 396 - 100% Tropical Wool - Black Only
- 398 - 100% Polyester - Black White Church Purple Red

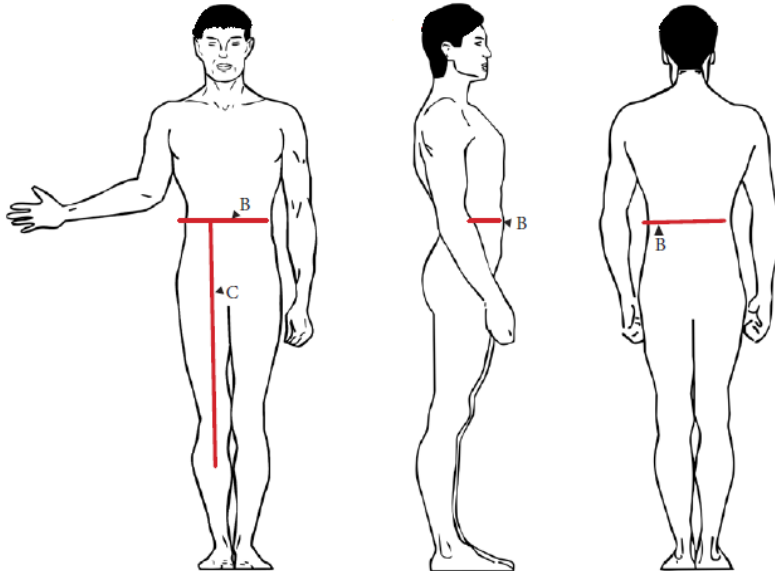


**Date:** \_\_\_\_\_  
**Customer info:**  
**Name:** \_\_\_\_\_ **Account #:** \_\_\_\_\_  
**Parish/School/Organization:** \_\_\_\_\_  
**Phone #:** \_\_\_\_\_ **Fax #:** \_\_\_\_\_  
**E-mail:** \_\_\_\_\_  
**Notes:** \_\_\_\_\_

**Item Details:**

**Item Number:** 900                      **Colour:** Black    White    Church Purple    Red

**Quantity of items:** \_\_\_\_\_  
**Male:** \_\_\_\_\_/ **Female:** \_\_\_\_\_



**Sizing of items:**

B Waist Girth: \_\_\_\_\_  
 C Overall Cincture Length: \_\_\_\_\_

**How to Measure:**  
 B - Waist girth - measured at the widest.  
 C - Overall cincture length - measured from the waist line to the tail.

Tip for Best Measuring Results:

- Your clothing is always custom-tailored to your individual measurements.
- You are welcome to provide additional comments and requests along with your measurements submissions (example - loose-fitting).
- When measuring, please put on the type of clothing usually worn under the garments orders.
- NOTE: Do NOT measure the garments yourself!
- NOTE: Do NOT take your measurements by yourself!
- You may also consider having your measurements taken but a professional tailor locally. However, do ask the professional to follow the Liturgix Measurements Chart instructions.
- For your convenience, all measurements are kept on file.

Other Details:

---

---

---



329/397/369/398

Confirmation of order:

Date: \_\_\_\_\_

Signature: \_\_\_\_\_